

Anti-POLR2E Antibody
Rabbit polyclonal antibody to POLR2E
Catalog # AP60363**Specification**

Anti-POLR2E Antibody - Product Information

Application	WB, IHC
Primary Accession	P19388
Other Accession	Q80UW8
Reactivity	Human, Mouse, Rat, Monkey, Bovine
Host	Rabbit
Clonality	Polyclonal
Calculated MW	24551

Anti-POLR2E Antibody - Additional Information**Gene ID** 5434**Other Names**

DNA-directed RNA polymerases I, II, and III subunit RPABC1; RNA polymerases I, II, and III subunit ABC1; DNA-directed RNA polymerase II 23 kDa polypeptide; DNA-directed RNA polymerase II subunit E; RPB5 homolog; XAP4

Target/Specificity

Recognizes endogenous levels of POLR2E protein.

Dilution

WB~~WB (1/500 - 1/1000), IH (1/100 - 1/200)

IHC~~1:100~500

Format

Liquid in 0.42% Potassium phosphate, 0.87% Sodium chloride, pH 7.3, 30% glycerol, and 0.09% (W/V) sodium azide.

Storage

Store at -20 °C.Stable for 12 months from date of receipt

Anti-POLR2E Antibody - Protein Information**Name** POLR2E ([HGNC:9192](#))**Function**

DNA-dependent RNA polymerase catalyzes the transcription of DNA into RNA using the four ribonucleoside triphosphates as substrates. Common component of RNA polymerases I, II and III which synthesize ribosomal RNA precursors, mRNA precursors and many functional non- coding RNAs, and small RNAs, such as 5S rRNA and tRNAs, respectively. Pol II is the central component of the basal RNA polymerase II transcription machinery. Pols are composed of mobile elements that move relative to each other. In Pol II, POLR2E/RPABC1 is part of the lower jaw surrounding the

central large cleft and thought to grab the incoming DNA template.

Cellular Location

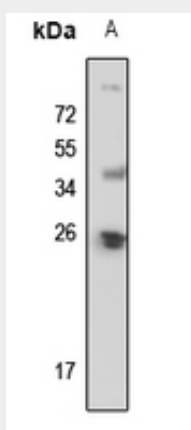
Nucleus. Nucleus, nucleolus

Anti-POLR2E Antibody - Protocols

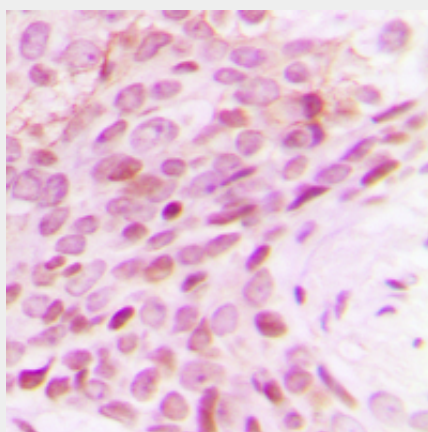
Provided below are standard protocols that you may find useful for product applications.

- [Western Blot](#)
- [Blocking Peptides](#)
- [Dot Blot](#)
- [Immunohistochemistry](#)
- [Immunofluorescence](#)
- [Immunoprecipitation](#)
- [Flow Cytometry](#)
- [Cell Culture](#)

Anti-POLR2E Antibody - Images



Western blot analysis of POLR2E expression in mouse kidney (A) whole cell lysates.



Immunohistochemical analysis of POLR2E staining in human breast cancer formalin fixed paraffin embedded tissue section. The section was pre-treated using heat mediated antigen retrieval with sodium citrate buffer (pH 6.0). The section was then incubated with the antibody at room temperature and detected using an HRP conjugated compact polymer system. DAB was used as

the chromogen. The section was then counterstained with haematoxylin and mounted with DPX.

Anti-POLR2E Antibody - Background

KLH-conjugated synthetic peptide encompassing a sequence within the center region of human POLR2E. The exact sequence is proprietary.